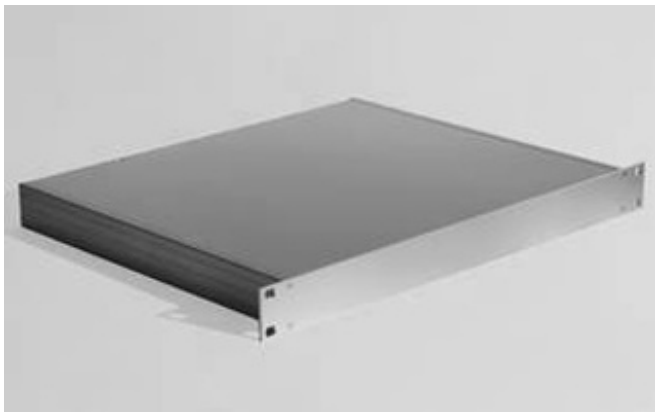


## Enclosure Assembly

### Examples of housings

To give you an idea of what kinds of enclosure can be manufactured with our front panels and side profiles, we have put a few examples together. You will find all of the front panels and the accessories required for producing the examples in the ZIP files. Detailed engineering drawings and specifications for the individual components required to assemble enclosures can be found in our [Housing Assembly Manual](#).



**Type: Side Profile 1 (height 42 mm)**

[Download ZIP-File](#)

**Type: Side Profile 2 (height 56 mm)**

[Download ZIP-File](#)

**Type: Housing Profile 1**

[Download ZIP-File](#)

**Type: Combination of  
Housing Profile 1 and 2**

[Download ZIP-File](#)

---

